

**NATIONAL HUMAN TRAFFICKING RESOURCE CENTER (NHTRC) DATA BREAKDOWN**

**Maine State Report  
1/1/2015 – 12/31/2015**

**OVERVIEW OF INCOMING SIGNALS**

The following information is based on incoming signals made to the NHTRC from January 1, 2015 – December 31, 2015 about human trafficking cases and issues related to human trafficking in Maine. **Signals** refer to incoming communications with the NHTRC and can take the form of **phone calls, online tip reports, or emails**. Signals regarding topics unrelated to human trafficking are not included in this report. In 2015, the NHTRC received a total of **24,757** signals nationwide.



**59** Phone Calls



**3** Emails



**2** Online Tip Reports

**SUBSTANTIVE CALL DATA**

The following statistics are based solely on substantive calls about human trafficking and issues related to human trafficking made to the NHTRC between January 1, 2015 and December 31, 2015 from callers in Maine at the time of the call. Substantive calls exclude hang-ups, missed calls, wrong numbers, and calls in which the caller's reason for calling is unknown.

**Number of Substantive Calls Received from Maine: 59\***

\*This constitutes the 42nd highest call volume of all 50 states and Washington, D.C. in 2015.

CALLER TYPE	# OF CALLS	% OF CALLS
Community Member	18	30.5%
Victim of Labor Exploitation	13	22.0%
Victim of Trafficking	10	16.9%
NGO Representative	9	15.3%
Caller Types Referenced Fewer than Three Times*	9	15.3%
<b>TOTAL # OF SUBSTANTIVE CALLS</b>	<b>59</b>	<b>100.0%</b>

\*To protect the identity of the people we serve, the NHTRC does not disclose exact statistics related to venues, industries, victim information or caller information referenced fewer than three times.

HOW DID CALLER FIND NHTRC (WHERE KNOWN)	# OF CALLS	% OF CALLS
Department of State Know Your Rights Pamphlet	7	43.8%
Referral	6	37.5%
Other	2	12.5%
Word of Mouth	1	6.3%
<b>TOTAL # OF CALLS WHERE HOW CALLER FOUND NHTRC IS KNOWN</b>	<b>16</b>	<b>100.0%</b>

## HUMAN TRAFFICKING CASE DATA

*Each request submitted to the hotline is evaluated for evidence of potential human trafficking. In Maine, a total of 10 unique cases (incidents) of potential human trafficking were reported to the hotline.*

PRIMARY REASON FOR CONTACTING THE NHTRC	# OF CASES	% OF CASES
Report a Trafficking Tip	7	70.0%
Access Service Referrals	3	30.0%
<b>TOTAL # OF CASES</b>	<b>10</b>	<b>100.0%</b>

*\*In some instances, an individual who is aware of a specific situation of potential trafficking may contact the NHTRC for general information about human trafficking or to learn more about services available to trafficking victims. In other instances, service providers or law enforcement working with a victim of trafficking may contact the NHTRC for technical assistance.*

VENUE/INDUSTRY OF POTENTIAL TRAFFICKING	# OF CASES	% OF CASES
<b>Sex</b>	<b>7</b>	<b>70.0%</b>
Venues Referenced in Fewer than Three Cases**	2	20.0%
Venue Not Specified	5	50.0%
<b>Labor</b>	<b>2</b>	<b>20.0%</b>
Industries Referenced in Fewer than Three Cases**	2	20.0%
<b>Sex &amp; Labor</b>	<b>1</b>	<b>10.0%</b>
<b>TOTAL # OF POTENTIAL TRAFFICKING CASES</b>	<b>10</b>	<b>100.0%</b>

*\*These cases typically involve reports of sex trafficking in which an individual is advertised for commercial sex online but the venue of the sex act is unknown or not specified.*

*\*\*To protect the identity of the people we serve, the NHTRC does not disclose exact statistics related to venues, industries, victim information or caller information referenced fewer than three times.*

*\*\*\*This typically occurs when a law enforcement agent or service provider contacts the NHTRC for resources and referrals but does not disclose details about the trafficking situation due to confidentiality. This category also includes cases in which the person reporting the information references human trafficking but does not provide further detail regarding the presence of labor or commercial sex. These cases are often submitted to the NHTRC through anonymous online tip reports.*

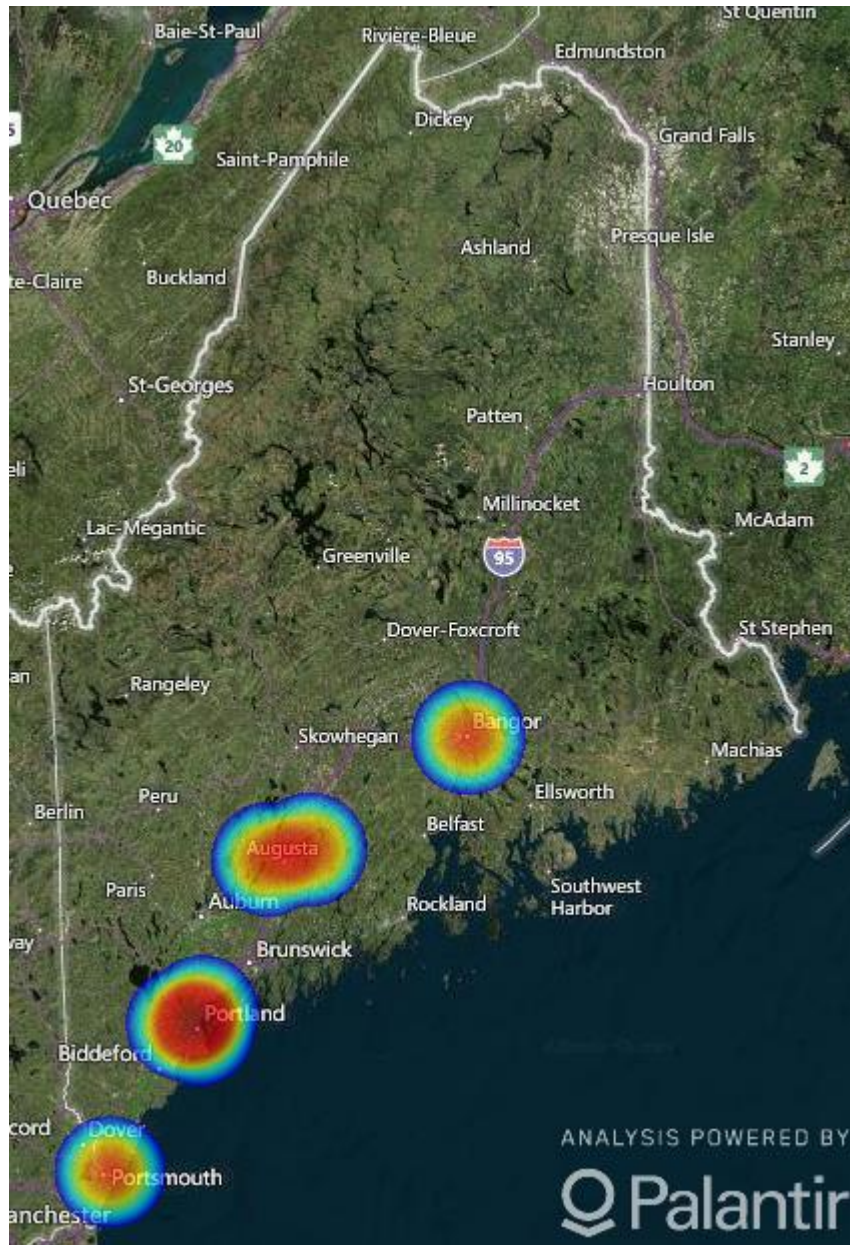
VICTIM DEMOGRAPHICS* (LABOR TRAFFICKING CASES)	# OF CASES	% OF CASES
Adults	Fewer than Three**	N/A
Minors	0	0.0%
Females	Fewer than Three**	N/A
Males	0	0.0%
Transgender Females	0	0.0%
Transgender Males	0	0.0%
Gender Non-Conforming Individuals	0	0.0%
US Citizens/Legal Permanent Residents	Fewer than Three**	N/A
Foreign Nationals	0	0.0%
<b>NON-CUMULATIVE*</b>		

*\*These statistics are non-cumulative. Cases may involve multiple victims and include female, male, transgender and gender non-conforming individuals, foreign nationals and U.S. citizens, adults and minors. In some cases, demographic information is not reported. This table shows the number of cases referencing each demographic and not the number of individual victims.  
\*\*To protect the identity of the people we serve, the NHTRC does not disclose exact statistics related to venues, industries, victim information or caller information referenced fewer than three times.*

VICTIM DEMOGRAPHICS* (SEX TRAFFICKING CASES)	# OF CASES	% OF CASES
Adults	3	42.9%
Minors	Fewer than Three**	N/A
Females	6	85.7%
Males	0	0.0%
Transgender Females	Fewer than Three**	N/A
Transgender Males	0	0.0%
Gender Non-Conforming Individuals	0	0.0%
US Citizens/Legal Permanent Residents	Fewer than Three**	N/A
Foreign Nationals	Fewer than Three**	N/A
<b>NON-CUMULATIVE*</b>		

*\*These statistics are non-cumulative. Cases may involve multiple victims and include female, male, transgender and gender non-conforming individuals, foreign nationals and U.S. citizens, adults and minors. In some cases, demographic information is not reported. This table shows the number of cases referencing each demographic and not the number of individual victims.  
\*\*To protect the identity of the people we serve, the NHTRC does not disclose exact statistics related to venues, industries, victim information or caller information referenced fewer than three times.*

LOCATION OF POTENTIAL TRAFFICKING CASES (WHERE KNOWN)\*



*\*These maps only reflect cases in which the location of the potential trafficking was known. Some cases may involve more than one location and are not reflected in this map.*

\*\*\*\*\*

**Important Note:** The data displayed in this report was generated based on information communicated to the National Human Trafficking Resource Center hotline via phone, email, and online tip report. The NHTRC cannot verify the accuracy of the information reported. This is not a comprehensive report on the scale or scope of human trafficking within the state. These statistics may be subject to change as new information emerges.