

NATIONAL HUMAN TRAFFICKING RESOURCE CENTER (NHTRC) DATA BREAKDOWN

**Montana State Report
1/1/2014 – 12/31/2014**

OVERVIEW OF INCOMING SIGNALS

The following information is based on incoming signals made to the NHTRC from January 1, 2014 – December 31, 2014 from individuals in Montana about human trafficking cases and issues related to human trafficking. **Signals** refer to incoming communications with the NHTRC and can take the form of **phone calls, online tip reports, or emails**. Signals regarding topics unrelated to human trafficking are not included in this report. In 2014, the NHTRC received a total of **24,062** signals nationwide.



74 Phone Calls



1 Email



0 Online Tip Reports

SUBSTANTIVE CALL DATA

The following statistics are based solely on substantive calls about human trafficking and issues related to human trafficking made to the NHTRC from January 1, 2014 – December 31, 2014 from callers in Montana at the time of the call. Substantive calls exclude hang-ups, missed calls, wrong numbers, and calls in which the caller’s reason for calling is unknown.

Number of Substantive Calls Received from Montana: 74*

**This constitutes the 39th highest call volume of all 50 states and Washington D.C. in 2014.*

CALLER TYPE	# OF CALLS	% OF CALLS
Community Member	25	33.78%
Victim of Labor Exploitation	9	12.16%
Victim of Trafficking	8	10.81%
NGO Representative	5	6.76%
Other	5	6.76%
Not Specified	4	5.41%
Law Enforcement	3	4.05%
Caller Types Referenced Fewer than Three Times*	15	20.27%
TOTAL # OF SUBSTANTIVE CALLS	74	100.00%

**To protect the identity of the people we serve, the NHTRC does not disclose exact statistics related to venues, industries, victim information or caller information referenced fewer than three times.*

HOW DID CALLER FIND NHTRC (WHERE KNOWN)	# OF CALLS	% OF CALLS
Internet-Web Search	6	18.75%
Department of State Know Your Rights Pamphlet	6	18.75%
Poster	4	12.50%
Polaris	4	12.50%
Conference/Training/Presentation	3	9.38%
Newspaper-Magazine	3	9.38%
Referral	2	6.25%
Television	1	3.13%
Word of Mouth	1	3.13%
Awareness Campaign	1	3.13%
Other	1	3.13%
TOTAL # OF CALLS WHERE HOW CALLER FOUND NHTRC IS KNOWN	32	100.00%

HUMAN TRAFFICKING CASE DATA

Each request submitted to the hotline is evaluated for evidence of potential human trafficking. In Montana, a total of 13 unique cases (incidents) of potential human trafficking were reported to the hotline in Montana.

PRIMARY REASON FOR CONTACTING THE NHTRC	# OF CASES	% OF CASES
Report a Potential Human Trafficking Tip	10	76.92%
Request for Referral for Anti-Trafficking Services	3	23.08%
TOTAL # OF CASES	13	100.00%

**In some instances, an individual who is aware of a specific situation of potential trafficking may contact the NHTRC for general information about human trafficking or to learn more about services available to trafficking victims. In other instances, service providers or law enforcement working with a victim of trafficking may contact the NHTRC for technical assistance.*

VENUE/INDUSTRY OF POTENTIAL TRAFFICKING	# OF CASES	% OF CASES
Sex	5	38.46%
Venues Referenced in Fewer than Three Cases**	5	38.46%
Labor	5	38.46%
Industries Referenced in Fewer than Three Cases**	5	38.46%
Type of Potential Trafficking Other/Not Specified***	3	23.08%
TOTAL # OF POTENTIAL TRAFFICKING CASES	13	100.00%

**These cases typically involve reports of sex trafficking in which an individual is advertised for commercial sex online but the venue of the sex act is unknown or not specified.*

***To protect the identity of the people we serve, the NHTRC does not disclose exact statistics related to venues, industries, victim information or caller information referenced fewer than three times.*

****This typically occurs when a law enforcement agent or service provider contacts the NHTRC for resources and referrals but does not disclose details about the trafficking situation due to confidentiality. This category also includes cases in which the person reporting the information references human trafficking but does not provide further detail regarding the presence of labor or commercial sex. These cases are often submitted to the NHTRC through anonymous online tip reports.*

VICTIM DEMOGRAPHICS* (LABOR TRAFFICKING CASES)	# OF CASES	% OF CASES
Adults	4	80.00%
Minors	0	0.00%
Females	3	60.00%
Males	Fewer than Three	N/A
Transgender Females	0	0.00%
Transgender Males	0	0.00%
US Citizen/Legal Permanent Residents	0	0.00%
Foreign Nationals	5	100.00%
NON-CUMULATIVE*		

**These statistics are non-cumulative. Cases may involve multiple victims and include female, male, and transgender individuals, foreign nationals and U.S. citizens, adults and minors. In some cases, demographic information is not reported. This table shows the number of cases referencing each demographic and not the number of individual victims.*

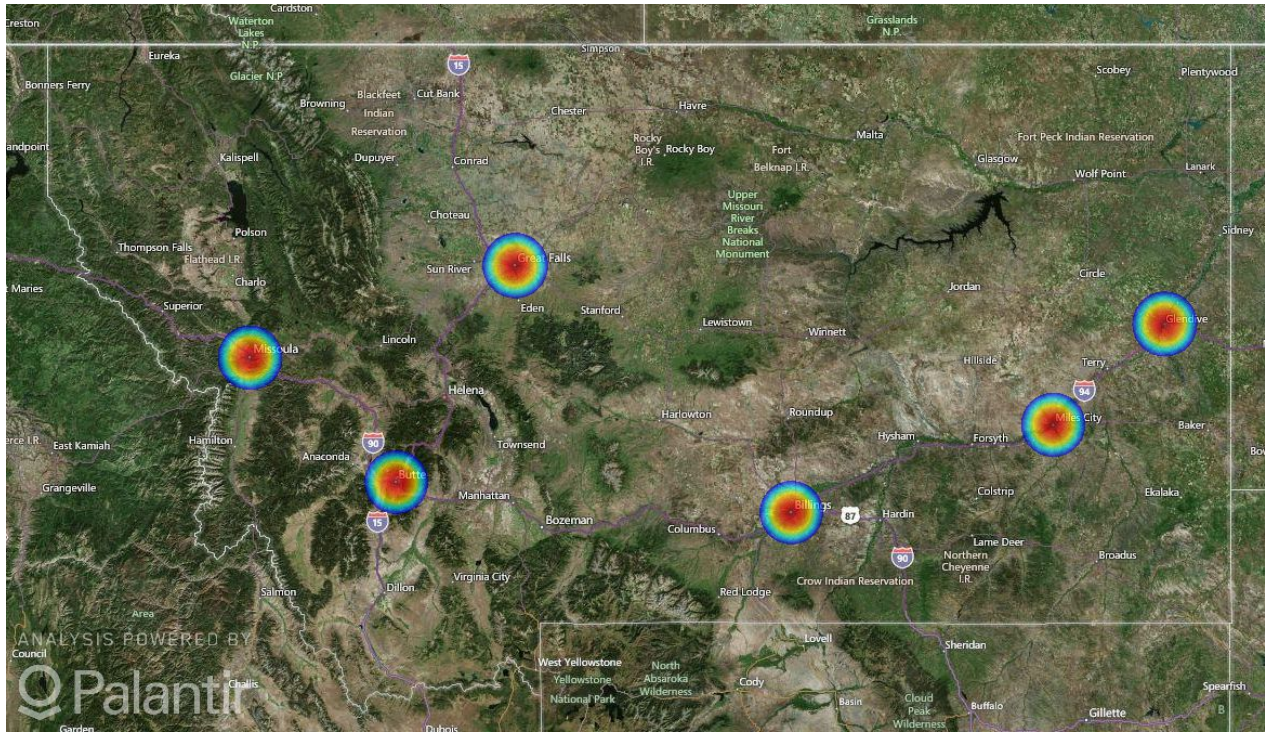
***To protect the identity of the people we serve, the NHTRC does not disclose exact statistics related to venues, industries, victim information or caller information referenced fewer than three times.*

VICTIM DEMOGRAPHICS* (SEX TRAFFICKING CASES)	# OF CASES	% OF CASES
Adults	Fewer than Three	N/A
Minors	Fewer than Three	N/A
Females	5	100.00%
Males	Fewer than Three	N/A
Transgender Females	0	0.00%
Transgender Males	0	0.00%
US Citizens/Legal Permanent Residents	0	0.00%
Foreign Nationals	Fewer than Three	N/A
NON-CUMULATIVE*		

**These statistics are non-cumulative. Cases may involve multiple victims and include female, male, and transgender individuals, foreign nationals and U.S. citizens, adults and minors. In some cases, demographic information is not reported. This table shows the number of cases referencing each demographic and not the number of individual victims.*

***To protect the identity of the people we serve, the NHTRC does not disclose exact statistics related to venues, industries, victim information or caller information referenced fewer than three times.*

LOCATION OF POTENTIAL TRAFFICKING CASES (WHERE KNOWN)*



**These maps only reflect cases in which the location of the potential trafficking was known. Some cases may involve more than one location and are not reflected in this map.*

Important Note: *The data displayed in this report was generated based on information communicated to the National Human Trafficking Resource Center hotline via phone, email, and online tip report. The NHTRC cannot verify the accuracy of the information reported. This is not a comprehensive report on the scale or scope of human trafficking within the state. These statistics may be subject to change as new information emerges.*