

**NATIONAL HUMAN TRAFFICKING RESOURCE CENTER (NHTRC) DATA BREAKDOWN**

**Kansas State Report**  
**1/1/2014 – 12/31/2014**

**OVERVIEW OF INCOMING SIGNALS**

The following information is based on incoming signals made to the NHTRC from January 1, 2014 – December 31, 2014 from individuals in Kansas about human trafficking cases and issues related to human trafficking. **Signals** refer to incoming communications with the NHTRC and can take the form of **phone calls, online tip reports, or emails**. Signals regarding topics unrelated to human trafficking are not included in this report. In 2014, the NHTRC received a total of **24,062** signals nationwide.



**336** Phone Calls



**6** Emails



**12** Online Tip Reports

**SUBSTANTIVE CALL DATA**

The following statistics are based solely on substantive calls about human trafficking and issues related to human trafficking made to the NHTRC from January 1, 2014 – December 31, 2014 from callers in Kansas at the time of the call. Substantive calls exclude hang-ups, missed calls, wrong numbers, and calls in which the caller's reason for calling is unknown.

**Number of Substantive Calls Received from Kansas: 336\***

\*This constitutes the 17th highest call volume of all 50 states and Washington D.C. in 2014.

CALLER TYPE	# OF CALLS	% OF CALLS
Community Member	128	38.10%
Other	36	10.71%
Victim of Trafficking	27	8.04%
Victim of Labor Exploitation	26	7.74%
NGO Representative	25	7.44%
Not Specified	21	6.25%
Law Enforcement	13	3.87%
Government Official	11	3.27%
Educator/School Personnel	7	2.08%
Faith-Based Representative	7	2.08%
Victim of Other Crime	6	1.79%
Family of Trafficking Victim	6	1.79%
Friend of Trafficking Victim	6	1.79%
Student	4	1.19%
Medical Professional	4	1.19%

This publication was made possible in part through Grant Number 90ZV0102 from the Anti-Trafficking in Persons Division, Office of Refugee Resettlement, U.S. Department of Health and Human Services (HHS). Its contents are solely the responsibility of the authors and do not necessarily represent the official views of the Anti-Trafficking in Persons Division, Office of Refugee Resettlement, or HHS.

Mental Health Professional	4	1.19%
Trucker	3	0.89%
Caller Types Referenced Fewer than Three Times*	2	0.60%
<b>TOTAL # OF SUBSTANTIVE CALLS</b>	<b>336</b>	<b>100.00%</b>

*\*To protect the identity of the people we serve, the NHTRC does not disclose exact statistics related to venues, industries, victim information or caller information referenced fewer than three times.*

HOW DID CALLER FIND NHTRC (WHERE KNOWN)	# OF CALLS	% OF CALLS
Internet-Web Search	41	37.61%
Referral	15	13.76%
Other	15	13.76%
Word of Mouth	7	6.42%
Department of State Know Your Rights Pamphlet	5	4.59%
Television	5	4.59%
Pamphlet/Brochure/Leaflet	5	4.59%
Other Media	5	4.59%
Conference/Training/Presentation	4	3.67%
Polaris	2	1.83%
DOJ Trafficking Hotline	1	0.92%
Ricky Martin Hotline	1	0.92%
Film	1	0.92%
Poster	1	0.92%
Newspaper-Magazine	1	0.92%
<b>TOTAL # OF CALLS WHERE HOW CALLER FOUND NHTRC IS KNOWN</b>	<b>109</b>	<b>100.00%</b>

### HUMAN TRAFFICKING CASE DATA

*Each request submitted to the hotline is evaluated for evidence of potential human trafficking. In Kansas, a total of 52 unique cases (incidents) of potential human trafficking were reported to the hotline in Kansas.*

PRIMARY REASON FOR CONTACTING THE NHTRC	# OF CASES	% OF CASES
Report a Potential Human Trafficking Tip	36	69.23%
Request for Referral for Anti-Trafficking Services	15	28.85%
Request for Technical Assistance and Information* on Topics Related to Human Trafficking	1	1.92%
<b>TOTAL # OF CASES</b>	<b>52</b>	<b>100.00%</b>

*\*In some instances, an individual who is aware of a specific situation of potential trafficking may contact the NHTRC for general information about human trafficking or to learn more about services available to trafficking victims. In other instances, service providers or law enforcement working with a victim of trafficking may contact the NHTRC for technical assistance.*

VENUE/INDUSTRY OF POTENTIAL TRAFFICKING	# OF CASES	% OF CASES
<b>Sex</b>	<b>35</b>	<b>67.31%</b>
Online Ad, Venue Not Specified*	8	15.38%
Hotel/Motel-Based	5	9.62%
Commercial Front Brothel	4	7.69%
Venues Referenced in Fewer than Three Cases**	6	11.54%
Venue Not Specified	12	23.08%
<b>Labor</b>	<b>10</b>	<b>19.23%</b>
Industries Referenced in Fewer than Three Cases**	10	19.23%
<b>Sex &amp; Labor</b>	<b>3</b>	<b>5.77%</b>
<b>Type of Potential Trafficking Other/Not Specified***</b>	<b>4</b>	<b>7.69%</b>
<b>TOTAL # OF POTENTIAL TRAFFICKING CASES</b>	<b>52</b>	<b>100.00%</b>

\*These cases typically involve reports of sex trafficking in which an individual is advertised for commercial sex online but the venue of the sex act is unknown or not specified.

\*\*To protect the identity of the people we serve, the NHTRC does not disclose exact statistics related to venues, industries, victim information or caller information referenced fewer than three times.

\*\*\*This typically occurs when a law enforcement agent or service provider contacts the NHTRC for resources and referrals but does not disclose details about the trafficking situation due to confidentiality. This category also includes cases in which the person reporting the information references human trafficking but does not provide further detail regarding the presence of labor or commercial sex. These cases are often submitted to the NHTRC through anonymous online tip reports.

VICTIM DEMOGRAPHICS* (LABOR TRAFFICKING CASES)	# OF CASES	% OF CASES
Adults	12	92.31%
Minors	3	23.08%
Females	9	69.23%
Males	7	53.85%
Transgender Females	0	0.00%
Transgender Males	0	0.00%
US Citizen/Legal Permanent Residents	4	30.77%
Foreign Nationals	7	53.85%
<b>NON-CUMULATIVE*</b>		

\*These statistics are non-cumulative. Cases may involve multiple victims and include female, male, and transgender individuals, foreign nationals and U.S. citizens, adults and minors. In some cases, demographic information is not reported. This table shows the number of cases referencing each demographic and not the number of individual victims.

\*\*To protect the identity of the people we serve, the NHTRC does not disclose exact statistics related to venues, industries, victim information or caller information referenced fewer than three times.

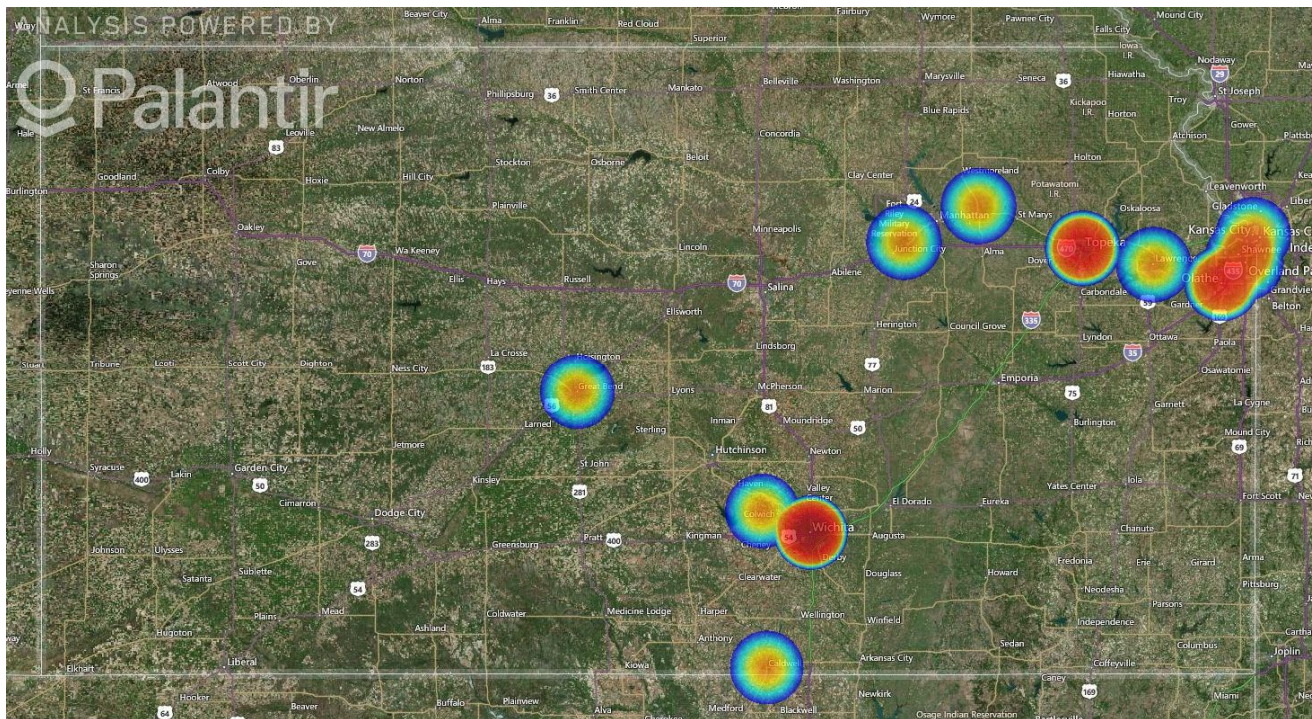
VICTIM DEMOGRAPHICS* (SEX TRAFFICKING CASES)	# OF CASES	% OF CASES
Adults	25	65.79%
Minors	9	23.68%
Females	35	92.11%
Males	Fewer than Three	N/A
Transgender Females	0	0.00%

Transgender Males	0	0.00%
US Citizens/Legal Permanent Residents	20	52.63%
Foreign Nationals	4	10.53%
<b>NON-CUMULATIVE*</b>		

*\*These statistics are non-cumulative. Cases may involve multiple victims and include female, male, and transgender individuals, foreign nationals and U.S. citizens, adults and minors. In some cases, demographic information is not reported. This table shows the number of cases referencing each demographic and not the number of individual victims.*

*\*\*To protect the identity of the people we serve, the NHTRC does not disclose exact statistics related to venues, industries, victim information or caller information referenced fewer than three times.*

**LOCATION OF POTENTIAL TRAFFICKING CASES (WHERE KNOWN)\***



*\*These maps only reflect cases in which the location of the potential trafficking was known. Some cases may involve more than one location and are not reflected in this map.*

\*\*\*\*\*

**Important Note:** The data displayed in this report was generated based on information communicated to the National Human Trafficking Resource Center hotline via phone, email, and online tip report. The NHTRC cannot verify the accuracy of the information reported. This is not a comprehensive report on the scale or scope of human trafficking within the state. These statistics may be subject to change as new information emerges.