

#### INTRODUCTION

The National Human Trafficking Hotline knows that hotels and motels are frequently utilized by traffickers to facilitate forced commercial sex or forced work. In many cases, hotel and motel owners may not be aware of how their businesses are being used to perpetuate these crimes. In an effort to shed light on trafficking in hotels and motels, the National Human Trafficking Hotline is providing the following information which can help hotel and motel staff and owners, community members, service providers, law enforcement, and others better understand how human trafficking is being conducted in these spaces. This is not a comprehensive report on the scale or scope of human trafficking occurring in hotels and motels. It represents only calls and cases made to the National Hotline from January 1, 2012 to December 31, 2016.

#### OVERVIEW OF INCOMING SIGNALS

The following information is based on incoming communication with the National Human Trafficking Hotline from January 1, 2012 to December 31, 2016 about human trafficking cases reported to have occurred in hotels and motels. Communication can take the form of **phone calls, online tip reports, or emails**. Communication regarding topics unrelated to trafficking are not included in this report. From January 1, 2012 to December 31, 2016, the National Human Trafficking Hotline received a total of **6,656** phone calls, emails, or online tip reports in connection to cases occurring in hotels and motels.



**6,181** Phone Calls



**59** Emails



**416** Online Tip Reports

#### SUBSTANTIVE CALL DATA

From January 1, 2012 through December 31, 2016, a total of **6,181 substantive phone calls** were made to the National Human Trafficking Hotline in connection to trafficking cases occurring in hotels and motels. Substantive calls are signals where the caller intended to reach the hotline and where the conversation was extensive enough for the hotline to determine the caller's request. They do not include immediate hang-ups, wrong numbers, or declined calls. The following information is based on these 6,181 calls. It does not reference data from the 59 emails or 416 online tip reports.

CALLER TYPE	# OF CALLS	% OF CALLS
Self-Identified Victim of Trafficking	2,158	34.91%
Family of Trafficking Victim	1,165	18.85%
NGO Representative	658	10.65%
Community Member	609	9.85%
Friend of Trafficking Victim	392	6.34%
Law Enforcement	344	5.57%
Government Official	119	1.93%
Contact from the Hotline Database	83	1.34%
Victim of Other Crime	83	1.34%
Other	70	1.13%
Acquaintance of Trafficker	66	1.07%
Buyer of Commercial Sex	64	1.04%

## NATIONAL HOTLINE CASES OCCURRING IN HOTELS AND MOTELS

United States: 1/1/2012 – 12/31/2016

Mental Health Professional	63	1.02%
Medical Professional	57	0.92%
Legal Professional	53	0.86%
Faith-based Organization/Representative	41	0.66%
Trucker	27	0.44%
Business	25	0.40%
Educator/School Personnel	25	0.40%
Potential Trafficker	7	0.11%
Student	5	0.08%
Press/Media	3	0.05%
Caller Types Referenced Fewer than Three Times <sup>1</sup>	6	0.10%
Unknown	58	0.94%
<b>TOTAL # OF CALLS</b>	<b>6,181</b>	<b>100.00%</b>

<sup>1</sup>To protect the identity of the people we serve, the National Human Trafficking Hotline does not disclose exact statistics related to caller information referenced fewer than three times.

HOW CALLER FOUND THE NATIONAL HOTLINE (WHERE KNOWN) <sup>2</sup>		
Referral	688	11.13%
Internet	435	7.04%
Awareness Campaign <sup>3</sup>	323	5.23%
Television	78	1.26%
Print Media	44	0.71%
Training/Conference	36	0.58%
DOS Know Your Rights Pamphlet	27	0.44%
US Government Campaign	16	0.26%
Radio	7	0.11%
Billboard	5	0.08%
Other National Hotline	3	0.05%
Film	1	0.02%
<b>TOTAL # OF CALLS</b>	<b>6,181</b>	<b>100.00%</b>

<sup>2</sup>The National Human Trafficking Hotline prioritizes callers' safety and most pressing needs over gathering information regarding how they learned about the hotline. As a result, this information was only collected when more urgent needs were not prioritized or it was incidentally provided by the caller during the course of the call.

<sup>3</sup>Due to changes in data structure, some specific campaigns which were previously tracked by the National Hotline are now reported as general awareness campaigns.

## NATIONAL HOTLINE CASES OCCURRING IN HOTELS AND MOTELS

United States: 1/1/2012 – 12/31/2016

### HUMAN TRAFFICKING CASE DATA

From the 6,656 phone calls, emails, and online tip reports received by the National Hotline from January 1, 2012 to December 31, 2016 in connection to human trafficking in hotels or motels, the National Human Trafficking Hotline obtained information regarding **2,386 cases** of potential trafficking. Each case represents a situation of trafficking which could include one or multiple potential victims.

The following information is based only on cases which were reported to have involved hotels and motels. However, descriptive information is frequently reported to the National Hotline about other methods used to perpetuate trafficking situations. Venues and Industries are assigned to cases based on the primary method through which the trafficking was operated. In many cases, hotels and motels were used by potential traffickers to facilitate their trafficking endeavors but were only a small part of the trafficking operation. In these cases, venues or industries were selected based on the primary method of operation which is why not all cases below are hotel/motel-based or hospitality trafficking.

VENUE OF POTENTIAL TRAFFICKING	# OF CASES	% OF CASES
<b>Sex</b>	<b>2,181</b>	<b>91.41%</b>
Hotel/Motel-Based	1,755	73.55%
Escort /Delivery Service	117	4.90%
Online Ad, Venue Unknown <sup>4</sup>	93	3.90%
Street-Based	61	2.56%
Residence-Based	33	1.38%
Other	16	0.67%
Truck Stop-Based	11	0.46%
Pornography	9	0.38%
Bar/Club-Based	8	0.34%
Hostess/Strip Club-Based	8	0.34%
Illicit Massage/Spa Business	8	0.34%
Personal Sexual Servitude	8	0.34%
Venues Referenced in Fewer than Three Cases <sup>5</sup>	2	0.08%
Venue Unknown	52	2.18%
<b>Labor</b>	<b>122</b>	<b>5.11%</b>
Hospitality	63	2.64%
Traveling Sales Crew	16	0.67%
Domestic Work	15	0.63%
Janitorial/Out-Call Cleaning Service	8	0.34%
Restaurant/Food Service	6	0.25%
Peddling Ring	3	0.13%
Industries Referenced in Fewer than Three Cases <sup>5</sup>	11	0.46%
<b>Sex and Labor</b>	<b>62</b>	<b>2.60%</b>
<b>Trafficking Type Not Specified<sup>6</sup></b>	<b>21</b>	<b>0.88%</b>
<b>TOTAL # OF POTENTIAL TRAFFICKING CASES</b>	<b>2,386</b>	<b>100.00%</b>

<sup>4</sup>Online Ad, Venue Unknown cases typically involve reports of sex trafficking in which an individual is advertised for commercial sex online but the venue of the sex act is unknown or not specified.

## NATIONAL HOTLINE CASES OCCURRING IN HOTELS AND MOTELS

United States: 1/1/2012 – 12/31/2016

<sup>5</sup>To protect the identity of the people we serve, the National Human Trafficking Hotline does not disclose exact statistics related to venues or industries referenced fewer than three times.

<sup>6</sup>Cases where trafficking type is not specified typically occur when a law enforcement agent or service provider contacts the National Hotline for resources and referrals but does not disclose details about the trafficking situation due to confidentiality. This category also includes case in which the person reporting the information references human trafficking but does not provide further detail regarding labor the presence of labor or commercial sex. These cases are often submitted to the National Hotline through anonymous online tip reports.

PRIMARY REASON FOR CONTACTING THE NATIONAL HOTLINE		
Report a Trafficking Tip	1,675	70.20%
Request Crisis Assistance	358	15.00%
Access Service Referrals	331	13.87%
Request General Information <sup>7</sup>	13	0.54%
Request T&TA <sup>8</sup>	9	0.38%
<b>TOTAL # OF CASES</b>	<b>2,386</b>	<b>100.00%</b>

<sup>7</sup>Requests for general information are situations in which an individual who is aware of a specific situation of potential trafficking may contact the National Human Trafficking Hotline for general information about human trafficking or to learn more about services available to trafficking victims.

<sup>8</sup>Requests for T&TA (Training and Technical Assistance) are situations in which service providers or law enforcement working with a victim of trafficking contact the National Hotline for technical assistance.

The victim demographic information below indicates the number of cases involving potential victims of each demographic, not the number of potential victims. Cases can involve more than one potential victim, and in some situations, incomplete or no information about potential victims' age, gender identity, or immigration status is reported to the National Hotline. Consequently, the demographic data below is non-cumulative.

VICTIM DEMOGRAPHICS (SEX TRAFFICKING CASES)	# OF CASES	% OF CASES
Adults	1,475	67.63%
Minors	862	39.52%
Females	2,090	95.83%
Males	102	4.68%
Transgender Females	18	0.83%
Transgender Males	3	0.14%
Gender Non-Conforming or Two-Spirit Individuals	Fewer than Three <sup>9</sup>	N/A
US Citizens/Legal Permanent Residents	1,140	52.27%
Foreign Nationals <sup>10</sup>	163	7.47%
<b>NON-CUMULATIVE</b>		

<sup>9</sup>To protect the identity of the people we serve, the National Human Trafficking Hotline does not disclose exact statistics related to victim information referenced fewer than three times.

<sup>10</sup>A Foreign National in this data set is defined as any individual who is not currently a US Citizen or Legal Permanent Resident.

VICTIM DEMOGRAPHICS (LABOR TRAFFICKING CASES)	# OF CASES	% OF CASES
Adults	108	88.52%
Minors	9	7.38%
Females	89	72.95%
Males	55	45.08%

## NATIONAL HOTLINE CASES OCCURRING IN HOTELS AND MOTELS

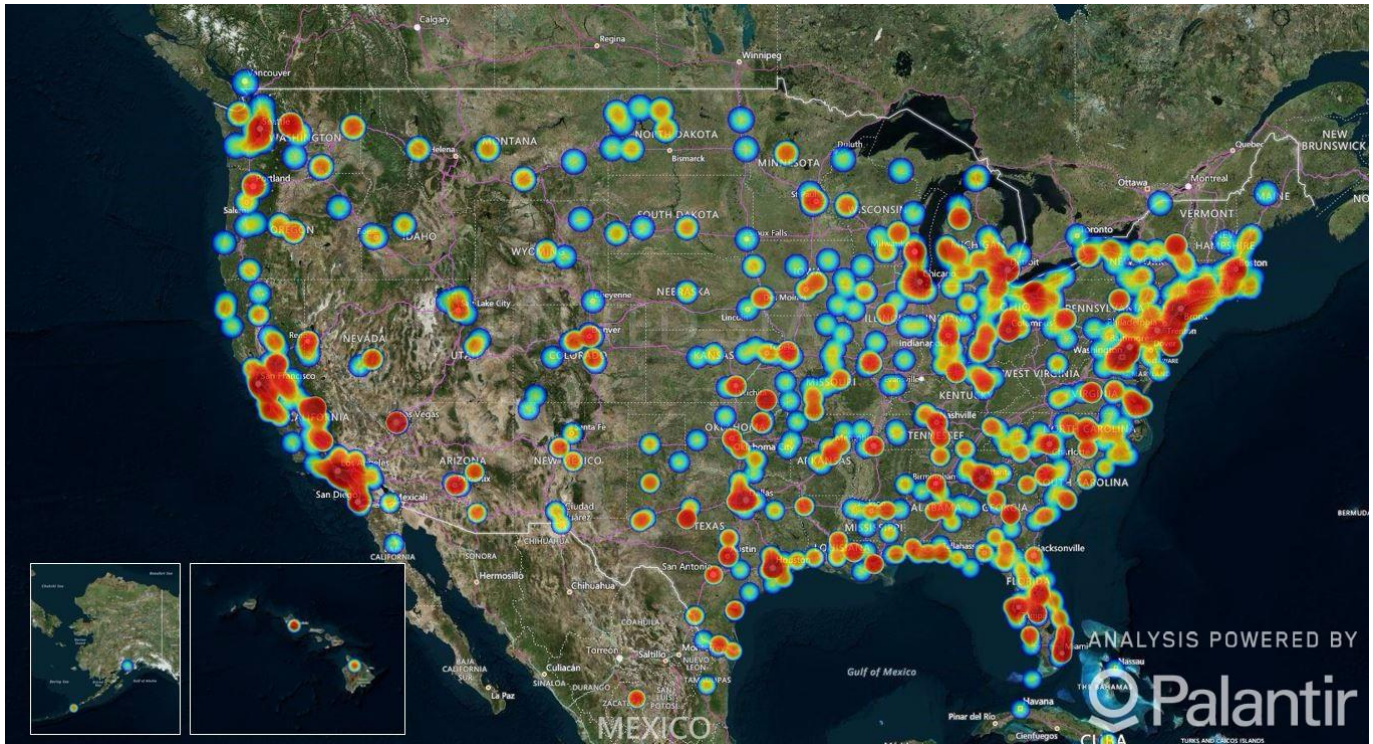
United States: 1/1/2012 – 12/31/2016

Transgender Females	Fewer than Three <sup>11</sup>	N/A
Transgender Males	Fewer than Three <sup>11</sup>	N/A
Gender Non-Conforming or Two-Spirit Individuals	Fewer than Three <sup>11</sup>	N/A
US Citizens/Legal Permanent Residents	30	24.59%
Foreign Nationals <sup>12</sup>	83	68.03%
<b>NON-CUMULATIVE</b>		

<sup>11</sup>To protect the identity of the people we serve, the National Human Trafficking Hotline does not disclose exact statistics related to victim information referenced fewer than three times.

<sup>12</sup>A Foreign National in this data set is defined as any individual who is not currently a US Citizen or Legal Permanent Resident.

### LOCATION OF POTENTIAL TRAFFICKING CASES IN THE UNITED STATES (WHERE KNOWN)<sup>13</sup>



<sup>13</sup>The image above is a heat map which reflects cases referencing Backpage.com reported to the National Human Trafficking Hotline from January 1, 2012 to December 31, 2016. Areas in which greater numbers of cases were reported contain more red shading. This map only reflects cases in which the location of the potential trafficking was known. Some cases may involve more than one location.

\*\*\*\*\*

#### Important Notes:

The data displayed in this report was generated based on information communicated to the National Human Trafficking Hotline via phone, email, and online tip report. Each situation of trafficking reported to the National Hotline was assessed for indicators of human trafficking and was found to have at least moderate- or high-level indicators. Assessment are made based on the information reported to the hotline. The National Human Trafficking Hotline is not able to verify the accuracy of reported information.

These statistics are accurate as of September 1, 2017. Situations of trafficking may be ongoing or new information may be revealed to the National Hotline over time so statistics may be subject to change as new information emerges.